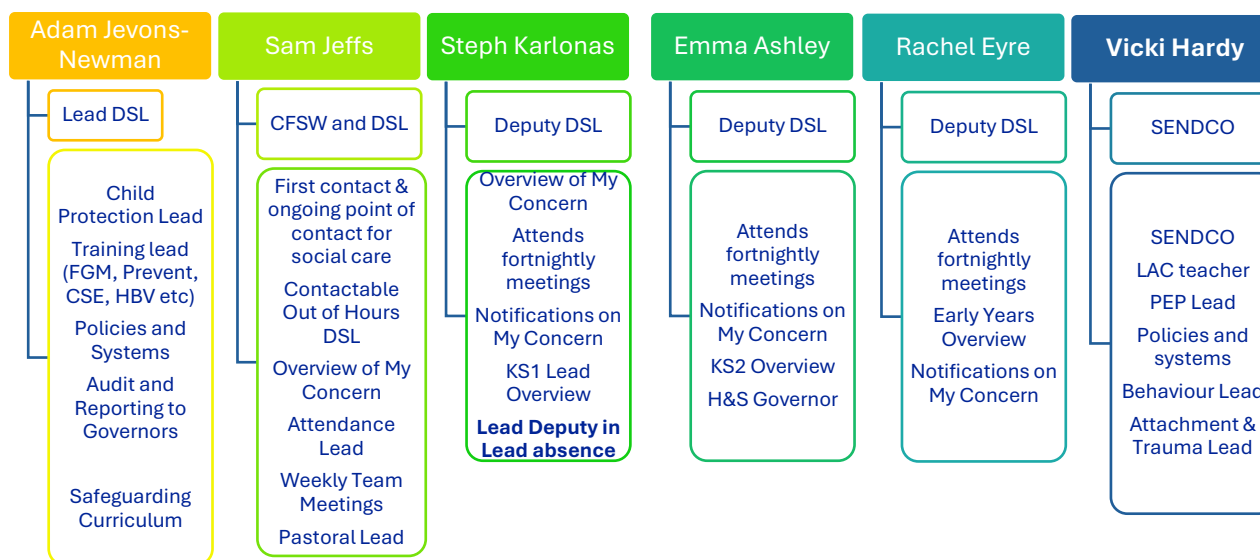


# SAFEGUARDING AT ABBEY HILL

**Intent:** Safeguarding is everyone’s business. We are committed to promoting the safety and welfare, both physical and emotional, of all our children and adults. Our intent is to ensure that our safeguarding procedures and practice are exemplary at Abbey Hill and that everyone feels safe and supported.

## Safeguarding Structure – Core DSL Team



## WIDER SAFEGUARDING TEAM

**Named First Aid Lead:**

Catherine Melton

**Mental Health Lead:**

Sam Jeffs

**Attachment & Trauma Lead:**

Vicki Hardy

**SCR Administrator:**

Joanne Parker-Clowes

**Site Security:**

Marc Naylor

**Safeguarding Governor:**

Karl Simpson

## Monitoring – concerns, school procedure and practice

Daily	<ul style="list-style-type: none"> <li>Lead DSL receives all concern notifications and reviews appropriate actions</li> <li>Lead DSL daily contact with agencies</li> <li>Staff briefings – safeguarding is the first staff briefings– update on vulnerable children/children of concern/what to look out for in particular that day</li> </ul>	<p><b>Visitors</b> Electronic signing, ID checks Issued with Safeguarding Leaflet</p>
Weekly or Fortnightly	<ul style="list-style-type: none"> <li>Weekly Lead DSL meetings – to discuss and review chronologies of vulnerable children and agree follow up actions.</li> <li>Fortnightly Team DSL meetings are minuted to show actions.</li> <li>Agree where appropriate any cases that need escalating.</li> <li>Face-to-face briefings share key information with all staff</li> <li>Key staff informed where concerns are around particular children.</li> </ul>	
Half-termly or termly	<ul style="list-style-type: none"> <li>Wider Safeguarding Team members join a DSL meeting to discuss concerns and actions.</li> <li>Staff training/briefings on specific themes e.g. FSM, CSE, etc</li> <li>Staff training briefings attendance is reviewed to ensure there is a ‘mop-up’ session.</li> </ul>	<p><b>Supply Staff</b> Induction and verbal information in relation to school procedures for safeguarding</p>
Annually	<ul style="list-style-type: none"> <li>All staff refresh their basic safeguarding, child protection training through SSSLearning</li> </ul>	
Transform Trust	<ul style="list-style-type: none"> <li>General advice and support</li> </ul>	<p>Trust Operational Lead: Claire McKendrick Trust DSL: Mary Farmer</p>

