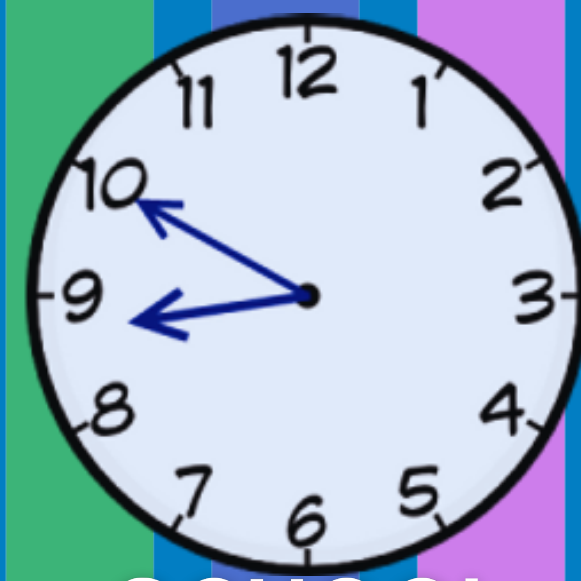


# ATTENDANCE ON THE HILL



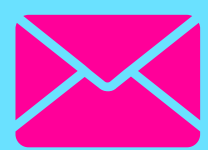
SCHOOL STARTS

8:50

Regular and punctual attendance is essential. We strive to make Abbey Hill the best place to be for our Abbeyhillians each day. We value good attendance and punctuality.

We expect all children to attend school every day.

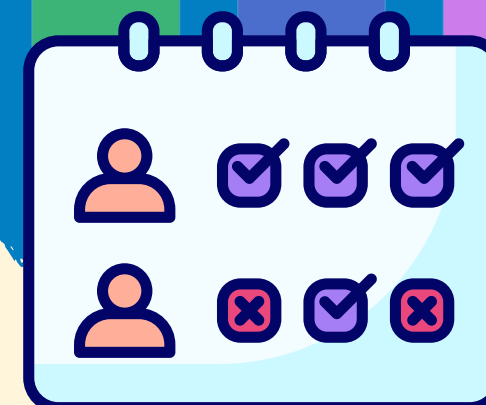
## REPORTING AN ABSENCE



Parents or carers must inform school if their child is going to be absent, no later than 8:45am. When we do not know, this is a safeguarding concern and will be treated as such.

Let us know, daily, by email: [pupilabsence@abbeyhill.notts.sch.uk](mailto:pupilabsence@abbeyhill.notts.sch.uk) or 01623484512. School office opens 8am.

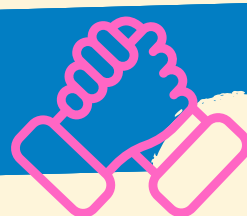
## REQUESTS FOR TERM-TIME ABSENCE



A leave of absence request may only be granted if it meets the specific circumstances set out in the 2024 school attendance regulations. These circumstances are:  
Taking part in a regulated performance, or regulated employment abroad.  
Attending an interview.

A temporary, time-limited part-time timetable. Exceptional circumstances ("unexpected, unavoidable, outside our control")

As a leave of absence will only be granted in exceptional circumstances, it is unlikely a leave of absence will be granted for the purposes of a family holiday.



## SUPPORTING

School is keen to support Abbeyhillians and families with attendance. This may include inviting families to attendance review meetings to introduce and agree actions to support families to improve attendance.

## PLANNED ABSENCES (E.G MEDICAL, DENTAL)

Attending a medical or dental appointment will be counted as authorised as long as the pupils' parent notifies the school in advance of the appointment. School should be notified of a planned absence, as soon as possible.

The Headteacher (or someone authorised by them), local authority or the Police can fine parents for the unauthorised absence of their child from school, where the child is of compulsory school age, by issuing a penalty notice. Each parent who is liable for the pupil's offence(s) can be issued with a penalty notice, but this will usually only be the parent/parents who allowed the absence.

## ATTENDANCE MONOPOLY

Classes with the top attendance or MOST-IMPROVED attendance roll the dice each week in assembly for prizes.

